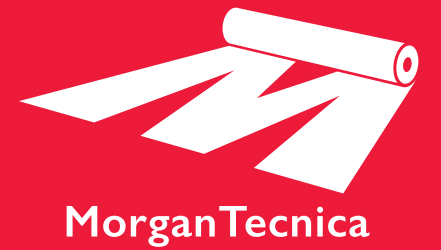


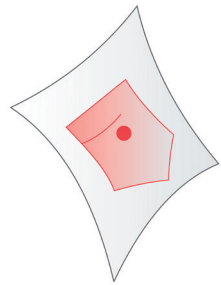
ITALY / INDIA / CANADA / HONG KONG / USA  

MorganTecnica SpA
Via San Pancrazio, 11/B - 25030 Adro (Brescia), Italy
Tel +39 030 7704446 - www.morgantecnica.com



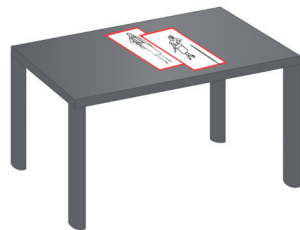
Software
Application Tool

FEATURES



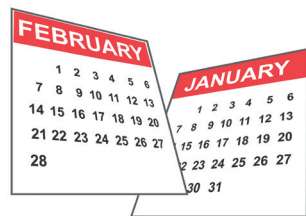
Sampling

- Sample request from customers
- Sample production orders
- Accurate fabric and material consumption calculation based on sampling
- Sample submission for customer approval
- Enforcement of colour/size requirements while submitting samples / Lab dips
- Recording customer comments and sample re-submission
- Final approval data
- Sampling statistics and analysis
- Integration with courier IT systems for generating airway bills and courier tracking.



Quality assurance

- Control the sample requirements like Lab Dips, size sets and production samples
- Sample evaluation management
- Target / actual - Measurement comparison
- Defects documentation with help of image data
- Creation and distribution of accurate inspection reports.



Transparent progress and Status control

- Flexible work flow system
- Status bar for progress of product development, Product procurement and delivery
- Communication function with Microsoft Outlook integration
- Integrated management for documents.



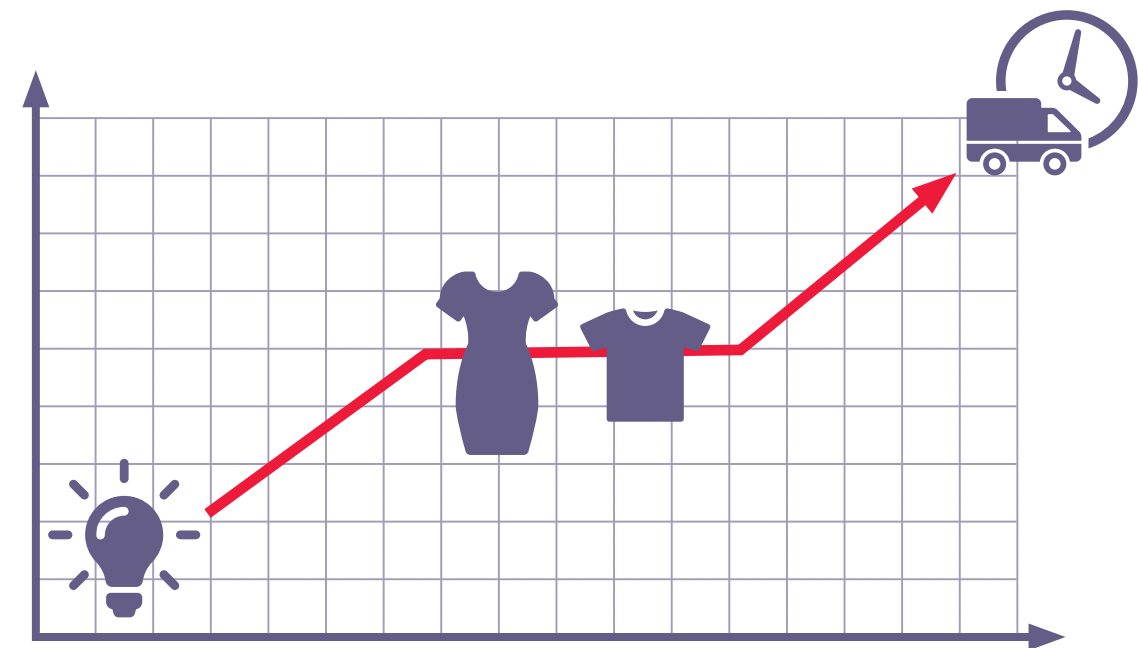
Integration with existing IT systems

- Standard integration with SAP
- Open interfaces for integrating with other ERP systems
- Web-service integration with any other systems.

PLM

Product Lifecycle Management

A sole application to manage the whole fashion industry work flow



PLM, covers every process from the point of creating the collection to the point of receiving the end products.

The application combines tools for:

- **Collection planning, product development & specifications**
- **Cost calculation, order & delivery management**
- **A flexible work-flow management within a single platform.**

PLM advanced software solutions



COLLECTION PLANNING



PRODUCT DEVELOPMENT & SPECIFICATIONS



COST CALCULATION

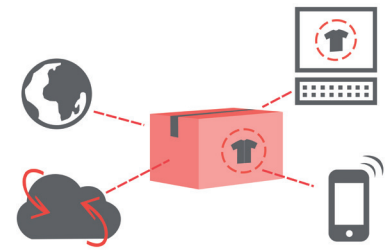


ORDER & DELIVERY MANAGEMENT

LOOK FOR YOUR BENEFITS!

- ✓ Simplifying and optimizing of processes.
- ✓ Simple and effective communication between internal and external stakeholders, using a comprehensive PLM-database.
- ✓ Better control of each milestone.
- ✓ Reduced costs by direct and fast communication as well as a process automation.
- ✓ Increase the revenue by saving time and reducing costs.
- ✓ Immediate identification of critical situations with an easy search option for alternative solutions.
- ✓ Optimizing of product quality by avoiding mistakes. Increase of customer satisfaction.

FEATURES



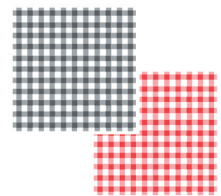
Collaboration and mobility

- Data Management within a central SQL-database
- Customizable responsibility concept
- Integrated user management with security concept
- Integrated supply chain application enables worldwide access via internet
- Integration with our own Mobile APPs.



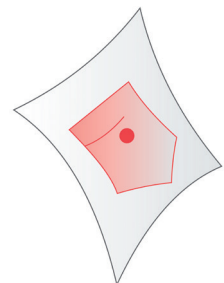
Collection Development

- Season and collection management
- Color card management
- Themes management
- Integrated standard color cards e.g. Pantone®-colors
- Management of moodboards, Collection reports, Status control and product catalogue.



Material Management

- Materials management with all relevant data
- Bill of Materials (BOM) Templates
- Material bill based on labels that can be assigned during product development automatically.



Base Libraries

- Measurement Chart library
- Basic forms management
- Image Library
- Product characteristics such as hierarchies, groups, price ranges etc.
- Individual status fields.

FEATURES



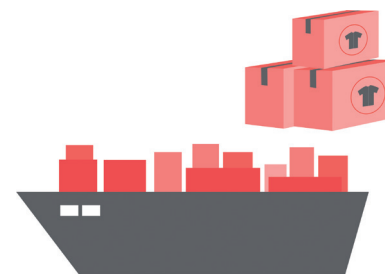
Product Management

- Product Characteristics
- Color Management
- Assign sizes and variants
- Product description
- Care Instructions
- Bill of Material with Color Co-ordination
- Fabric Composition
- Size Chart
- Image data and detailed sketches
- Picture data management with Integrated interface
- Supports all Windows graphic formats, OLE interface and Adobe Illustrator interface
- Sample Orders and Sample Tracking
- Accurate product specification sheets as communication tool.



Purchase Management

- Process partner management, such as suppliers, agents, QC-Partner, logistics partner
- Price inquiry and quote comparison
- Order placement
- Delivery date control
- Packing instructions
- Order tracking
- Statistics and reporting system.



Delivery Management

- Management of packing lists
- Management of deliveries
- Management of shipping and containers
- Control of dates
- Statistics and reporting system.