

MorganTecnica

ITALY / INDIA / CANADA / HONG KONG / USA



MorganTecnica SpA  
Via San Pancrazio, 11/B - 25030 Adro (Brescia), Italy  
Tel +39 030 7704446 - [www.morgantecnica.com](http://www.morgantecnica.com)



MorganTecnica

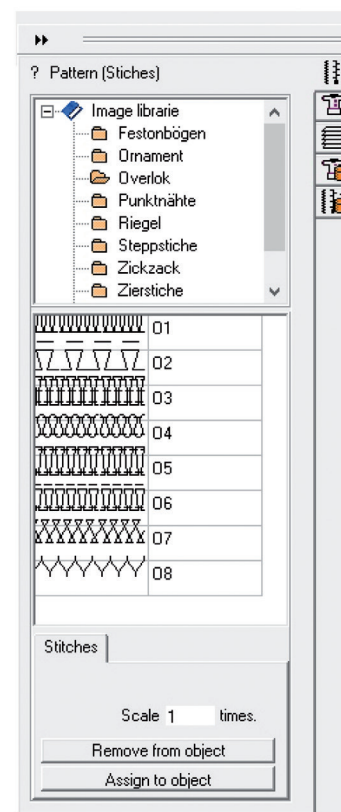
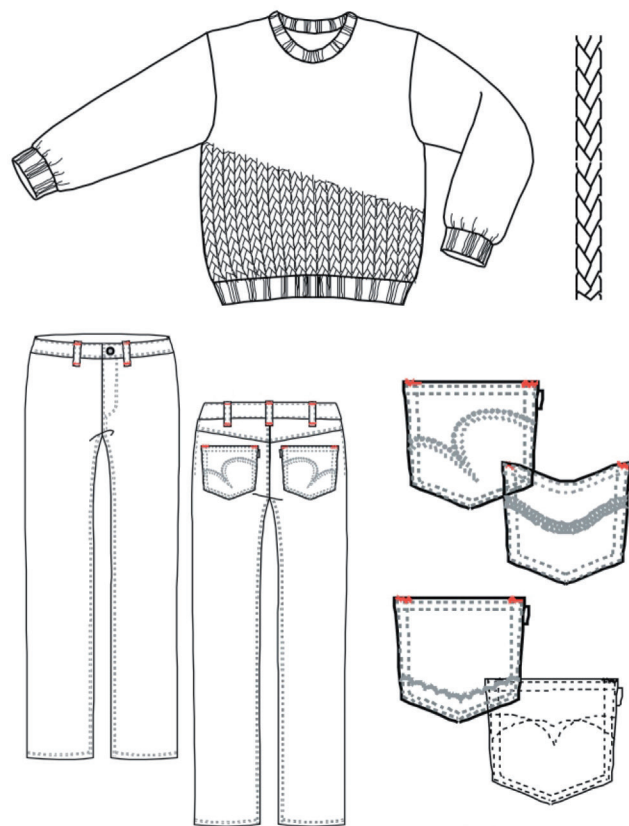
Software

Application Tool

## FEATURES

### Style and object libraries

- Easy to use filing system for handling objects and elements based on the Microsoft Office standard
- Create your own style and object libraries
- Integrated libraries for stitches and zippers.



# SKETCHER

## Drawing software

Designed specifically to fit the work flow requirements of the garment industry.



Is a powerful drawing tools, library functions and well organized interface allow you to quickly and accurately create new styles, or modify and reuse existing drawings. You can add measurements with to your drawing which relate to the size specification for the garment. When you are working in scale you can automatically add the measurements directly to your drawing. Compatible with PDM software.

# SKETCH

advanced software  
solutions



VECTOR-ORIENTED DRAWINGS



USER FRIENDLY DRAWING TOOL



INTEGRATED DATABASE

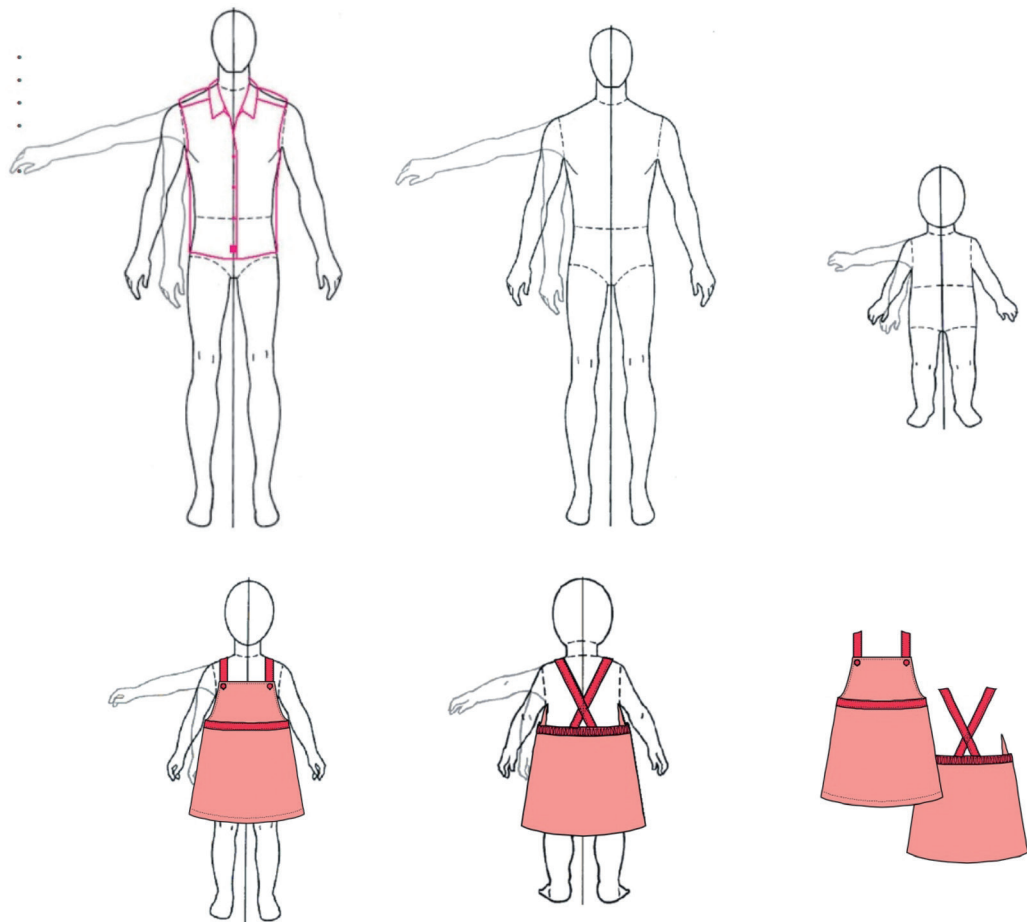


STYLE PARTS LIBRARY: COLLARS, POCKETS, STITCHES, ZIPPERS...

## FEATURES

### Creating and modifying drawings

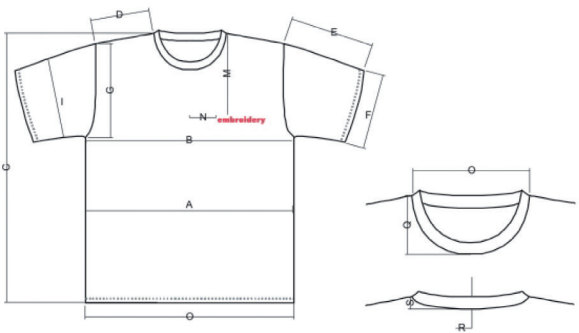
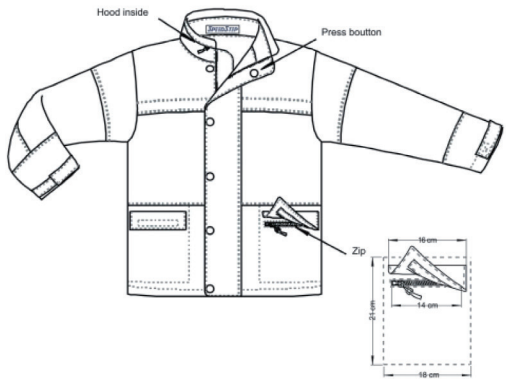
- Powerful and easy to use vector drawing tools
- Drawing lines and curves without interrupting your work
- Adjustable attributes of drawing like line weight, filling color, filling pattern and changing colors
- Special Drawings like mirrored drawing or drawing on masters
- Creating stitch lines, zippers and button facing
- Unique zooming functions with overview window
- Create drawings true to scale
- Twain scanner interface
- Function for transforming pixel graphics to vector graphics.



## FEATURES

### Production drawings

- Add measurements and labels for integration into size specifications
- Add actual measurements when working in scale
- Faster preparation of size specifications to give you more time to concentrate on your design work
- Style organization in different layers
- Fully integrated with MorganTechnica PDM
- Text functions including "Stamps" (Checked, Invoiced, etc.).



<b>Sketch</b>		<b>Article:</b> <b>Qual:</b> <b>Season:</b> <b>Size:</b> <b>Base:</b> <b>Customer:</b> <b>Date:</b> <b>Note:</b>
<b>Stitching</b>		
	Loop width: distance betw. bartacks:	
	Lap seam back yoke: seat seam:	

Measurement		
Pos.	Description	Sample Size 38
A	1/2 waist	46 cm
B	1/2 chest	46 cm
C	length	60 cm
D	shoulder length	11 cm
E	sleeve length	15 cm
F	1/2 cuff opening	10 cm
G	armhole straight	22 cm
I	1/2 upperarm width	19 cm
M	embroidery position	20 cm
N	embroidery length	10 cm
O	1/2 neckwidth fr. HPS to HPS	12 cm
Q	depth of neck front fr. HPS to HPS	7 cm
R	depth of neck back fr. HPS to HPS	1,5 cm
S	binding height c.b.	2 cm